

Blackboard collaborate 
web conferencing

Version 11


Illuminate Plan! v2.1
Installation and Registration
Guide

December, 2011





Table of Contents



Preface	1
Audience	1
Conventions Used in this Guide	1
Operating System Differences	1
Notes	2
Typographical Conventions	2
Help and Resources	3
Technical Support	3
Community	3
Product Feedback	3
Chapter 1 System Requirements	5
Minimum Elluminate Plan! Requirements	5
Java	5
System Requirements	6
Elluminate Plan! Limitations	6
Blackboard Collaborate Compatibility	7
Chapter 2 Installation	9
Upgrade Paths	9
Windows	9

Mac, Linux and Solaris	10
Installing Elluminate Plan!	10
Uninstalling Elluminate Plan!	17
Windows	17
Macintosh	18
Linux and Solaris	18
Chapter 3 Registration	19
Entering your registration information when you start	19
Entering your registration information from within the application	23
Copyright	25
Trademarks	26

Preface



Audience

This guide is written for *Elluminate Plan!*™ users wanting to install and register *Elluminate Plan!*

Conventions Used in this Guide

Operating System Differences

This guide is written for *Elluminate Plan!* users on all supported operating systems: Windows, Mac OS X, Linux and Solaris.

Screen Captures

Most screen captures shown in this guide were taken in a Windows environment. If you are running *Elluminate Plan!* on a Mac OS X, Solaris or Linux platform, the appearance of windows, dialog boxes, etc. will differ slightly from those shown in this guide.

Notes

Six types of notes may be used in this guide to highlight information:



Note: Notes are used to highlight important information or to present asides relevant to the topic at hand.



Tip: Tips provide helpful information on how to most effectively use a particular feature of the product.



Caution: Cautions alert you to potentially confusing terminology or difficulties that may occur when using the product.



Warning: Warnings alert you to potentially serious problems.



Notes of this format are used to highlight Linux-specific information.



Notes of this format are used to highlight Mac-specific information.

Typographical Conventions

Convention	Description
1. Number	Indicates a step in a task.
○ Hollow bullets	Indicates that there are several options available for completing a task, but only one is necessary.
Bold	Represents clickable elements in the user interface (e.g., text links, buttons, tabs, etc.). Also used to give emphasis to words.
<i>Italics</i>	Represents menu items, options and parameters. Also used for cross references.
Monospace	Indicates pathnames, filenames, folders and command lines.
<brackets>	Indicates variables.



Help and Resources

Technical Support

Blackboard Collaborate technical support and the support Knowledge Base are available through the Support Portal:

<http://support.blackboardcollaborate.com>

Community

We encourage Blackboard Collaborate users of all levels to join our Collaborati User's Group (https://www.coursesites.com/s/_Collaborati), a new community in which users can share their experiences, ideas, research, and best practices with their peers via forums and user-generated blogs.

Product Feedback

Blackboard Collaborate welcomes your comments and suggestions. If you have an idea for a new feature or enhancement, or would like to send other feedback, please send an email to BBCollaborateFeedback@blackboard.com.

Your suggestion will be sent directly to our Product Management Team.

Chapter 1



System Requirements

Before you install *Illuminate Plan!*™, ensure that your computer meets or exceeds the following minimum requirements.

Minimum *Illuminate Plan!* Requirements

Java

Before you begin installation of *Illuminate Plan!*, ensure your computer is running Oracle's Java 1.5 or higher as it is required by the installation software. You can download it from Oracle's Java website (<http://www.java.com/en/>) or Blackboard Collaborate's Support portal (support.blackboardcollaborate.com).



For a 32 bit OS use a 32 bit JVM and for a 64 bit OS use a 64 bit JVM. If the correct version of Java is not detected, Blackboard Collaborate will prompt you to install a new version.

System Requirements

Windows

- Windows XP (32 bit), or Vista (32 or 64 bit) or Windows 7 (32 or 64 bit)
- Pentium III 500 MHz processor

Mac

- Mac OS X 10.5 (32 or 64 bit) or Mac OS X 10.6 (32 or 64 bit)
- G4, G5, or Intel processor

Solaris

- Solaris 10 (SPARC only) (64 bit)
- UltraSPARC IIc 500 MHz processor

Linux

- openSUSE 11 (64 bit) or Ubuntu 9.10 (64 bit)
- Pentium III 1 GHz processor

In addition to the above requirements, all clients require the following:

- 256 MB RAM
- 20 MB free disk space

Illuminate *Plan!* Limitations

For information on limitations, such as whiteboard file size limitations, consult your Blackboard Collaborate server administrator. You can view the default file size quotas in the *Illuminate Plan!* Session Plan Preferences dialog.



Caution: Do not change the quota values unless instructed to do so by Blackboard Collaborate.

Blackboard Collaborate Compatibility

Session plans created in *Elluminate Plan!* 2.1 can be run in the following applications:

- Blackboard Collaborate 11
- *Elluminate Live!* 9.5 or higher



Note: Session plans created in *Elluminate Plan!* 2.0 and 2.1 (.elpx files) cannot be run in *Elluminate Live!* 8.5, 9.0 or 9.1 but require *Elluminate Live!* 9.5 or higher or Blackboard Collaborate 11. However, you **can** run *Elluminate Plan!* 1.0 session plans (.elp files) in *Elluminate Live!* 9.5 or higher and Blackboard Collaborate 11.

Chapter 2



Installation

Upgrade Paths

Windows

Two different installers are available for Windows Vista and Windows 7: 32-bit and 64-bit. For Windows XP, only a 32-bit installer is available.

64-Bit System

Prior to *Elluminate Plan! 2.1*, it was possible to install *Elluminate Plan! 1.0* or *2.0* on your 64-bit system using the old 32-bit installer. If you did so and now want to use the 64-bit installer to install *Elluminate Plan! 2.1* on your 64-bit system (which is advised), **uninstall your earlier version of *Elluminate Plan!*** before installing *Elluminate Plan! 2.1*. (For details, see *Uninstalling Elluminate Plan!* on page 17.)

32-Bit System

If you previously installed *Elluminate Plan! 1.0* or *2.0* on your 32-bit system, you may install version 2.1 of *Elluminate Plan!* over version 1.0 or 2.0 (using the 32-bit installer) – there is no need to uninstall version 1.0 or 2.0 first.

Mac, Linux and Solaris

You may install version 2.1 of *Elluminate Plan!* over version 1.0 or 2.0 – there is no need to uninstall version 1.0 or 2.0 first.

Installing Elluminate *Plan!*

Download the *Elluminate Plan!* installation software for your specific platform from the *Elluminate Plan!* product download web page:

http://www.illuminate.com/Other/Download_Plan!_V2/?id=150

Be sure to use a 32-bit installer on a 32-bit machine and a 64-bit installer on a 64-bit machine. For help in determining if your machine is 32-bit or 64-bit, please refer to the Knowledge Base Article *How do I upgrade to Elluminate Plan! V2.1?* available at the link below:

<http://support.blackboardcollaborate.com/ics/support/KBAnswer.asp?questionID=720>



Tip: Be sure to also download the *Elluminate Plan!* User's Guide from the web page. The document will not be accessible if you are not connected to the Internet – which may be the case when you are creating session plans.

To install *Elluminate Plan!*, follow the steps below.

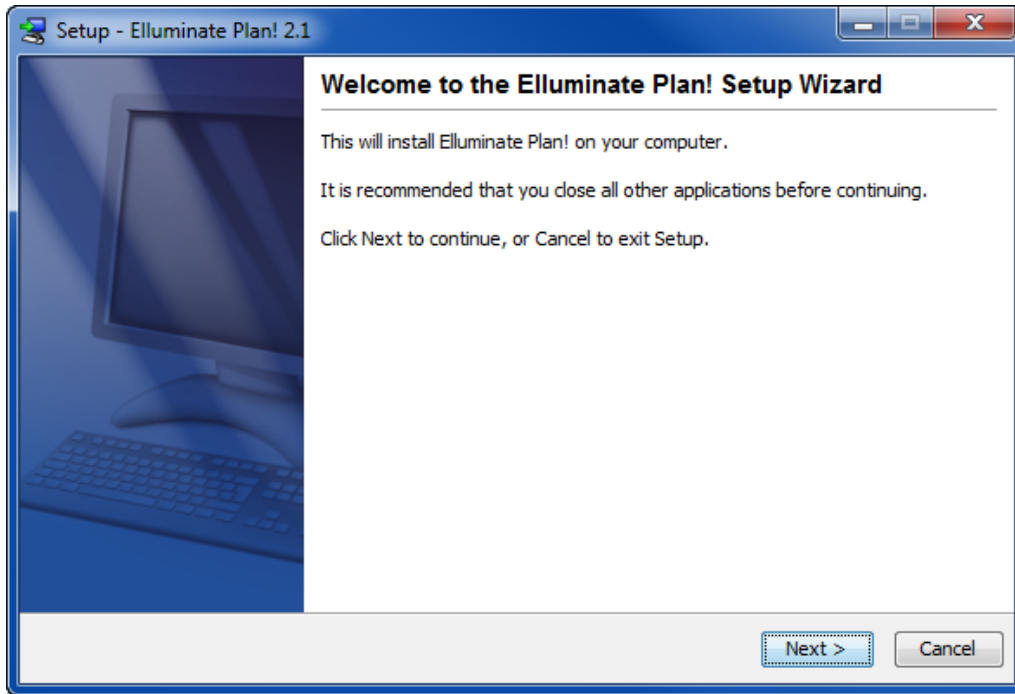


Note: Each step below discusses a panel in the installer. Move between the panels by clicking the **Next** > button.

1. Open/run the installer. The Welcome panel appears. (You don't need to do anything here, so continue to the next panel.)



Note: If you do not have Java installed on your system, you will get an error and will not be able to proceed with the installation. Download Java 1.5 or higher and start the installer again. (For details on downloading Java, refer to *Minimum Elluminate Plan! Requirements* on page 5.)



2. Read the license agreement and, if you agree to the terms, select *I accept the agreement*.

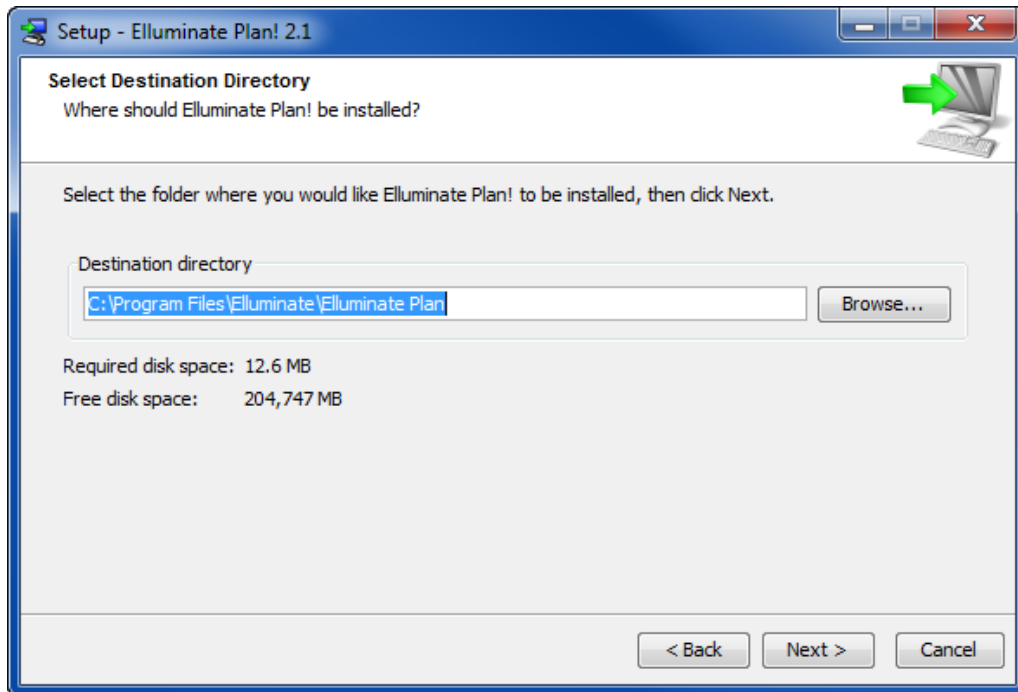


Note: If you do not accept the agreement, you will not be able to continue with the installation.

3. Specify into which directory you would like to install the *Elluminate Plan!* application and its library. Either accept the default directory or browse to and select a different directory.



Note: If you select a directory containing a previous installation of *Elluminate Plan!*, the installer will assume that you are upgrading to a new version and overwrite the previous version. You will not be notified of this.



Tip: This panel lists the disk space required for *Elluminate Plan!* Make sure you specify a directory on a drive that has sufficient disk space.

The default installation locations are as follows:

Windows

C:\Program Files\Elluminate\Elluminate Plan

Mac

/Applications/Elluminate/Elluminate Plan

Linux/Solaris

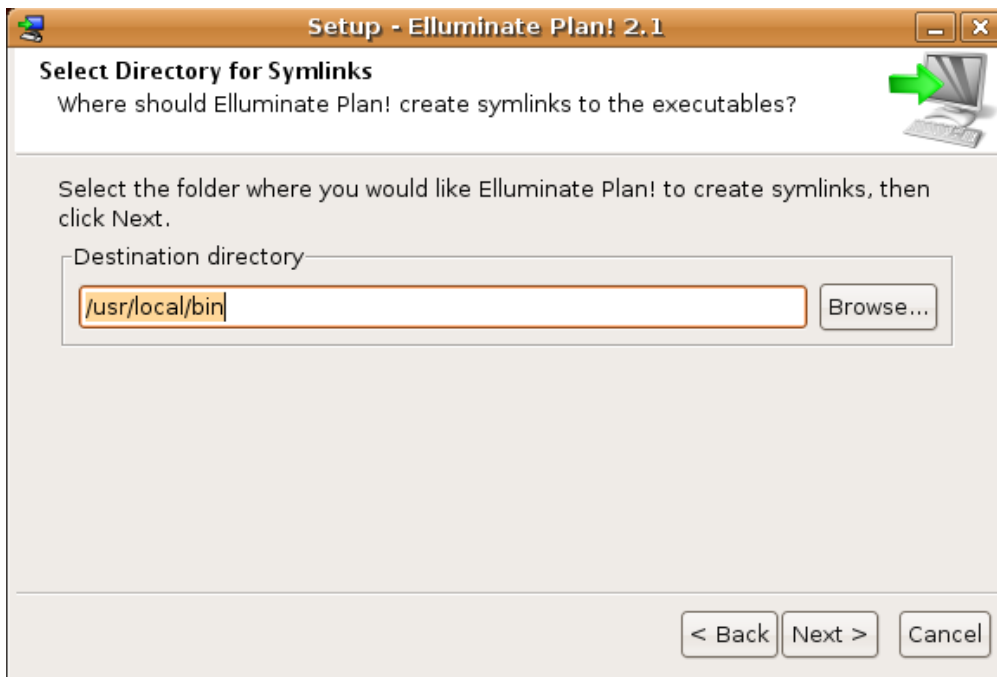
Root Login:

/opt/Elluminate/Elluminate_Plan

Standard Login:

/home/<user_name>/Elluminate/Elluminate_Plan

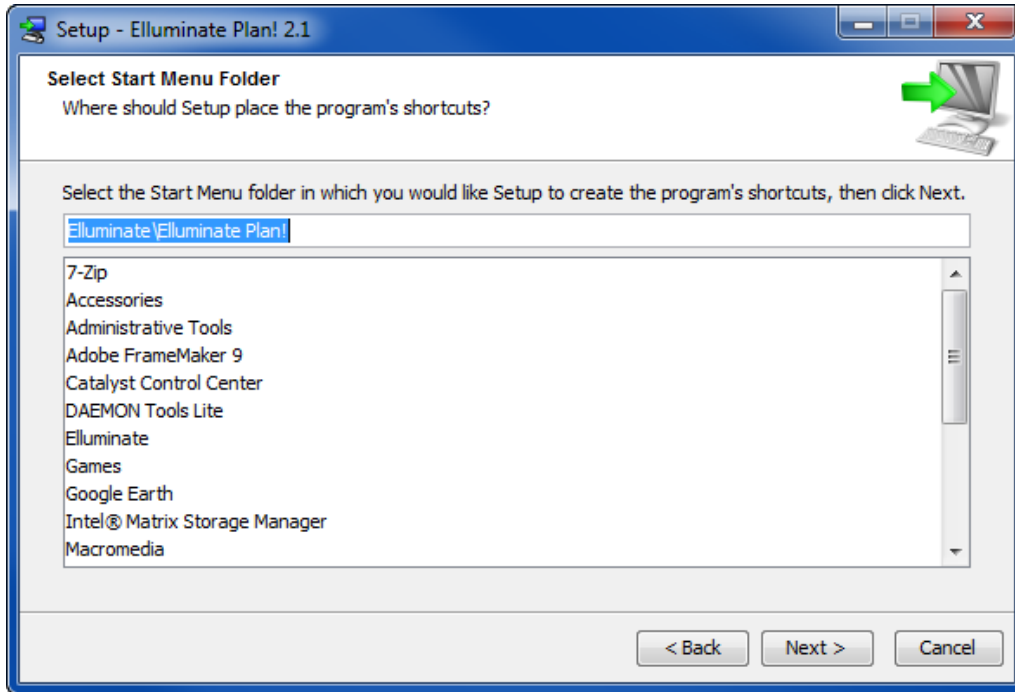
4. (Linux/Solaris only) Specify into which directory you would like to install the symlinks.



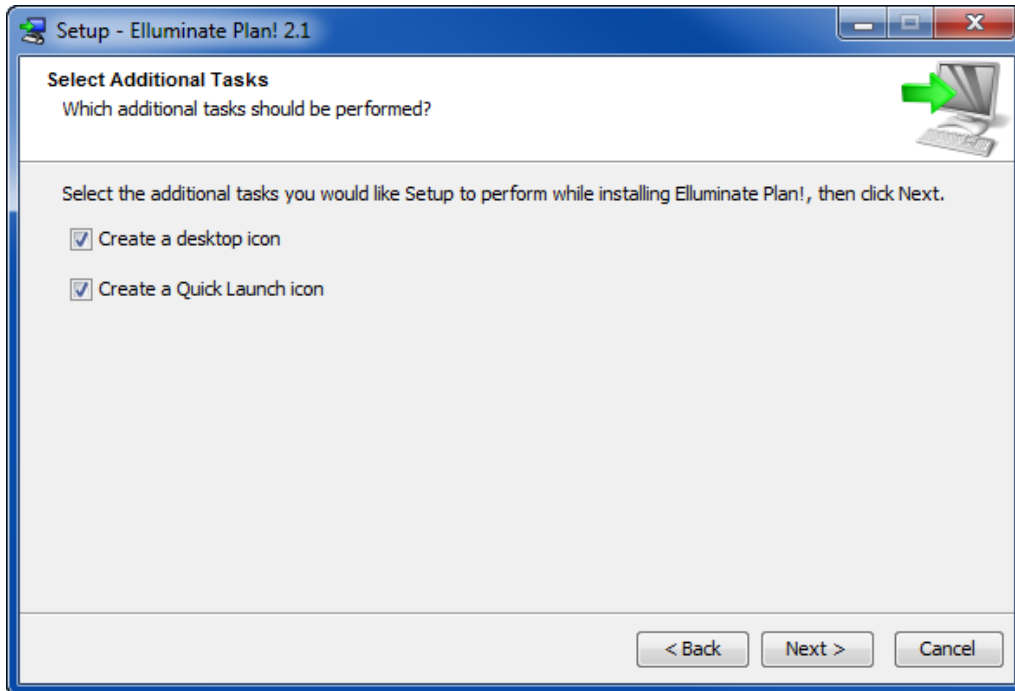
Note: Root users can use the default location (`/usr/local/bin`). However, standard users do not have write access to the default location and will have to choose a different directory.

5. (Windows only) Specify into which Start Menu folder you would like to place the program shortcut for *Elluminate Plan!*

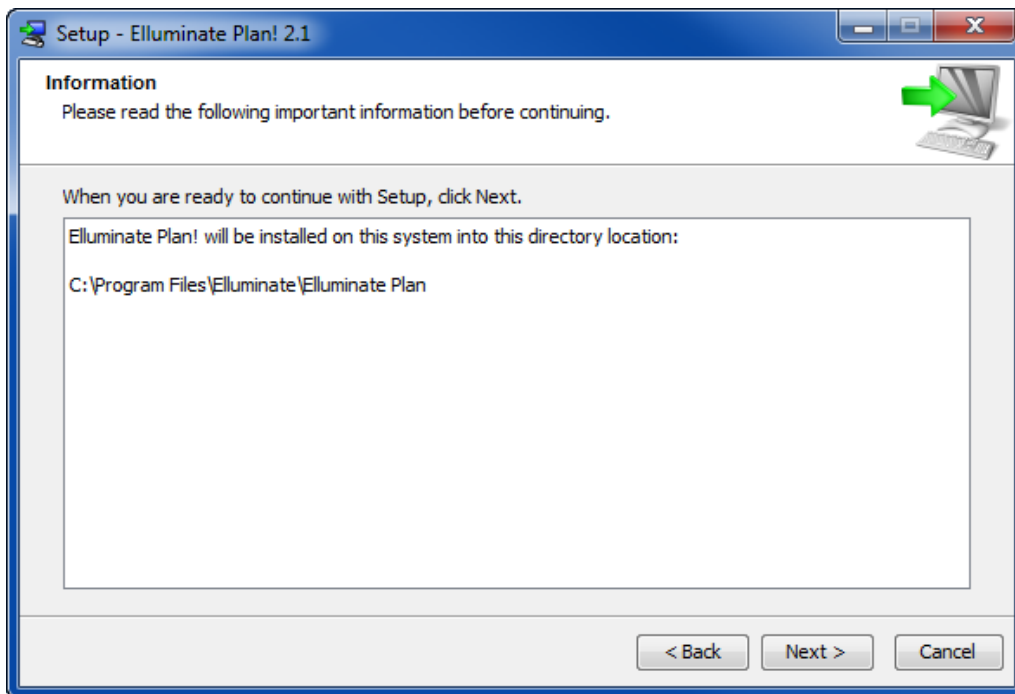
If you used the default, the shortcut's path will be Start > Programs > Elluminate > Elluminate Plan! > Elluminate Plan!



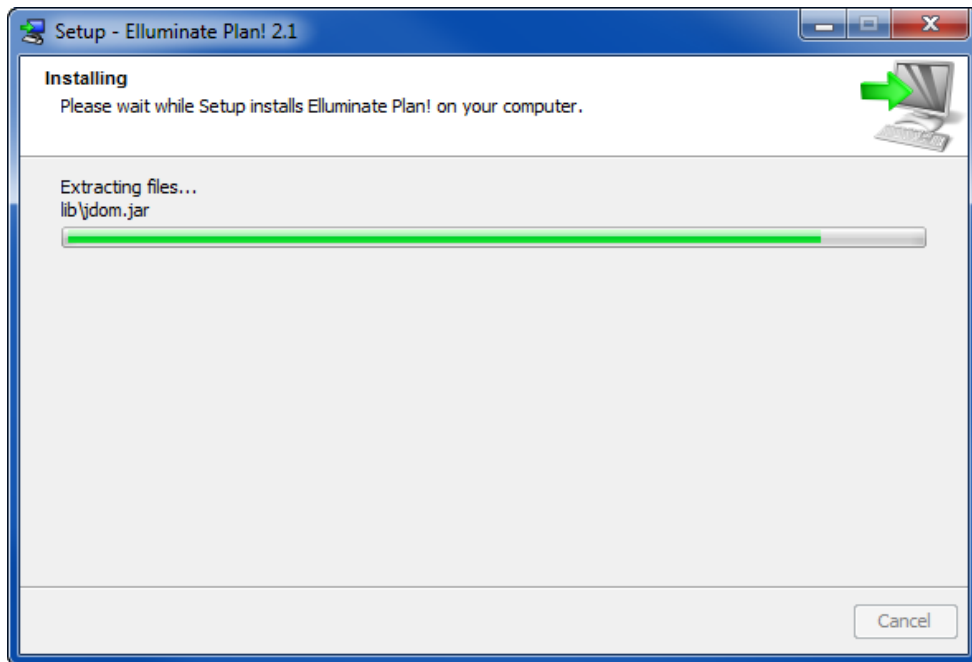
- Specify whether or not you would like the installer to create an *Elluminate Plan!* icon on your desktop and, on Windows only, a Quick Launch icon in your Task Bar by selecting/deselecting the options.



- Read the Information panel to confirm the installation directory is correct.



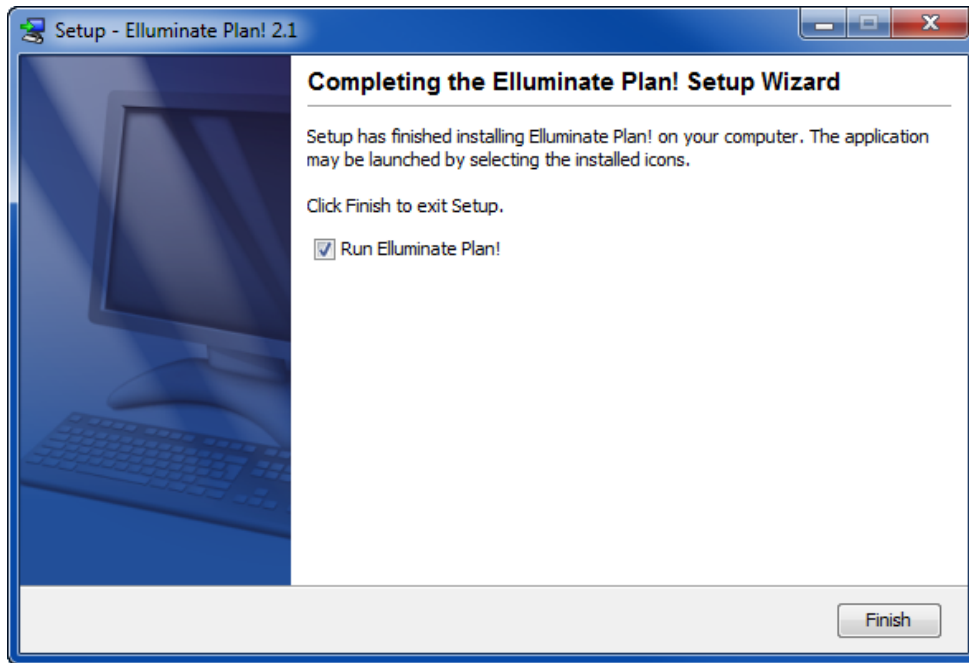
8. Click **Next** > to start the installation process. The Installing panel will appear, showing the progress of your installation.



9. When installation is complete, the following panel is displayed. Select the option *Run Elluminate Plan!* if you would like to start the application immediately.



The first time you launch *Elluminate Plan!* you will be prompted to enter your registration information. For details on doing so, see *Entering your registration information when you start* on page 19.



10. Click **Finish** to exit the installer.

Uninstalling Elluminate Plan!

On all platforms, use the uninstallation application to remove *Elluminate Plan!* from your computer.

Windows

On Windows, the uninstaller performs four tasks:

- Removes the application icon from your desktop.
- Deletes the application folder and its contents:
C:\Program Files\Elluminate\Elluminate Plan
- Removes the *Elluminate Plan!* Start Menu items.
- Removes the Session Plan entries from the Windows Registry.

To uninstall *Elluminate Plan!*, launch the uninstaller in one of two ways:

- Select Start > Programs > Elluminate > Elluminate Plan! > Elluminate Plan! Uninstaller.
- Run the *Elluminate Plan!* Uninstaller executable file:

```
C:\Program Files\Elluminate\Elluminate Plan\uninstall.exe
```

Restart your computer to complete the uninstallation process.

Macintosh

On the Mac, the uninstaller performs two tasks:

- Removes the application icon from your desktop.
- Deletes the application folder and its contents:

```
/Applications/Elluminate/Elluminate Plan
```

To uninstall *Elluminate Plan!*, run the *Elluminate Plan!* Uninstaller executable file:

```
/Applications/Elluminate/Elluminate Plan/Elluminate Plan!  
Uninstaller
```

Linux and Solaris

On Linux and Solaris, the uninstaller performs three tasks:

- Removes the application icon from your desktop.
- Deletes the application folder and its contents:

Root Login:

```
/opt/Elluminate/Elluminate_Plan
```

Standard Login:

```
/home/<user_name>/Elluminate/Elluminate_Plan
```

- Removes the symlinks.

To uninstall *Elluminate Plan!*, run the uninstaller executable file:

Root Login:

```
/opt/Elluminate/Elluminate_Plan/uninstall.sh
```

Standard Login:

```
/home/<user_name>/Elluminate/Elluminate_Plan/uninstall.sh
```

Chapter 3



Registration

Entering your registration information when you start

The first time you launch *Elluminate Plan!* you will be prompted to enter your registration information.



Note: Registration is mandatory. You may skip the registration process when first launching the product. However, if you do, you (or any other user on your computer) will be prompted to register each time you launch *Elluminate Plan!*, until registration is completed.



Note: You also may register from within *Elluminate Plan!* by selecting Registration from the Help menu.

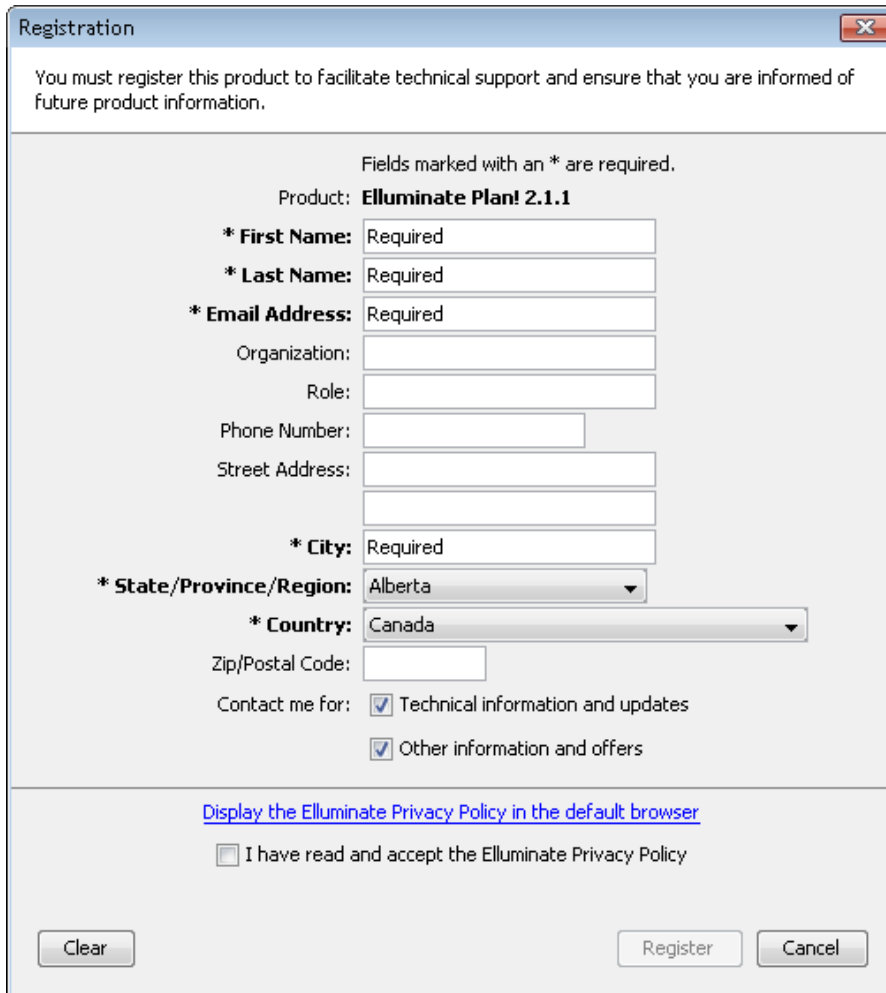
1. Launch *Elluminate Plan!* in one of the following ways:
 - Select the option *Run Elluminate Plan!* during the installation process.
 - Click on the *Elluminate Plan!* icon on your desktop.
 - (Windows only) Click on the *Elluminate Plan!* icon in your Quick Launch toolbar.
 - Run the *Elluminate Plan!* executable file:
 - Windows
C:\Program Files\Elluminate\Elluminate Plan\Plan.exe
 - Macintosh
Applications/Elluminate/Elluminate Plan/Plan
 - Linux/Solaris
 - Root Login:**
/opt/Elluminate/Elluminate_Plan/Plan.sh
 - Standard Login:**
/home/<user_name>/Elluminate/Elluminate_Plan/Plan.sh
 - (Windows only) Navigate to and select the Start Menu shortcut. If you chose the default for your shortcut, select Start > Programs > Elluminate > Elluminate Plan! > Elluminate Plan!

The registration form opens.

2. Enter your registration information.



Note: If you are upgrading from *Elluminate Plan!* version 1.0 or 2.0, you will be prompted to update your existing registration information.



Registration

You must register this product to facilitate technical support and ensure that you are informed of future product information.

Fields marked with an * are required.

Product: **Elluminate Plan! 2.1.1**

* **First Name:** Required

* **Last Name:** Required

* **Email Address:** Required

Organization:

Role:

Phone Number:

Street Address:

* **City:** Required

* **State/Province/Region:** Alberta

* **Country:** Canada

Zip/Postal Code:

Contact me for: Technical information and updates
 Other information and offers

[Display the Elluminate Privacy Policy in the default browser](#)

I have read and accept the Elluminate Privacy Policy

Clear Register Cancel

You have two options:

- Postpone the registration process until next time you launch *Elluminate Plan!* by clicking on **Cancel**.

- Complete the registration form.
 - a. Enter information about yourself and your organization.



Note: All fields marked with an asterisk (*) are mandatory: *First Name, Last Name, Email Address, City, State/Province/County/Region* and *Country*.



Tip: The country field is read from your system settings and should already be filled in automatically. If it is not, and you are not from the United States, select your *Country* before attempting to select your *State/Province/County/Region*.

- b. Select the desired contact options:
 - *Technical information and updates:* if you select this option, you will be placed on Blackboard Collaborate's technical mailing list and receive information such as tips on using *Illuminate Plan!* (and Blackboard Collaborate's other products) and information on the availability of *Illuminate Plan!* upgrades.
 - *Other information and offers:* if you select this option, you will be placed on a Blackboard Collaborate mailing list and receive Blackboard Collaborate's semi-monthly newsletter *Newsline*, as well as occasional email promotions.
- c. Click on the link *Display the Illuminate Privacy Policy in the default browser* to read the Privacy Policy and select the option *I have read and accept the Illuminate Privacy Policy*.



Note: To complete registration, you **must** select this option. If you do not, the **Register** button will be disabled.

- 3. When you have completed the registration form, you have three options:
 - Click on **Register**. The *Illuminate Plan!* application is launched.
 - Click on **Clear**. This will remove all the information you entered in the fields, allowing you to start over. Return to *step* .
 - Click on **Cancel**. The *Illuminate Plan!* application is launched. You will have to complete registration later.



Entering your registration information from within the application

If you skipped registration during the installation process, or you want to edit your existing registration information, you can access the registration form from within the application.

From the Help menu, select Registration and then follow the steps outlined in *Entering your registration information when you start* on page 19 (beginning with step 3).

Copyright

This document contains confidential proprietary information and is protected by law. This document and the information contained in it are intended for authorized users only and may be used only for the express purpose of legally accessing and using Blackboard Inc. products; any other use, without Blackboard Inc.'s prior written permission, is strictly prohibited.

© 2011 Blackboard Inc. All Rights Reserved.

Trademarks

Blackboard Collaborate® and Blackboard Collaborate Web Conferencing® are registered trademarks of Blackboard Inc. and its subsidiary companies. All rights reserved.

Illuminate *Plan!*™ is a trademark of Blackboard Inc. and its subsidiary companies. All rights reserved.

Illuminate *Publish!*™, Illuminate *Unplugged!*™, and Illuminate *Unplugged! Recording!*™ are trademarks of Blackboard Inc. and its subsidiary companies. All rights reserved.

All other brand or product names are trademarks or registered trademarks of their respective companies or organizations.